





3



1



1

- Desirable Location
- Three Bedrooms
- Attached Garage
- Close To Amenities
- Viewing Recommended
- Bungalow
- Off Street Parking
- Front and Rear Gardens
- Freehold
- Call For More Information





SEMI DETACHED BUNGALOW | THREE BEDROOMS | GARAGE & OFF-STREET PARKING

Positioned on the popular Brunton Road, this well presented three-bedroom, semi-detached bungalow offers generous family accommodation.

Positioned in a great location, within easy reach of the A1, Bank Foot, and Kingston Park Metro stations, and a number of local bus routes to and from the City centre, Ponteland and Westerhope. Also close to a fantastic range of local amenities and facilities including well-regarded schools and shopping at Kingston Park retail park.

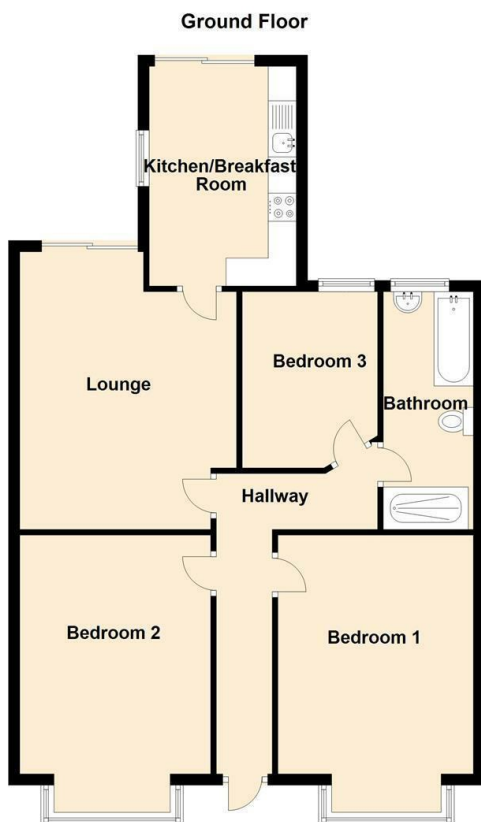
Internally the property briefly comprises: - entrance hallway, spacious lounge with patio doors to the rear, kitchen with wall and floor units, integrated oven and hob and sliding doors to the rear, three bedrooms; two with bay windows, and a part tiled bathroom with a walk-in shower cubicle. Externally there is a garden and driveway to the front leading to the attached garage and to the rear there is a garden with a patio area and lawn. The property also benefits from gas central heating and double glazing.

For more information and to book a viewing please call our Gosforth office on 0191 236 2070.

Tenure

The agent understands the property to be freehold. However, this should be confirmed with a licenced legal representative.

Council Tax band *C*.



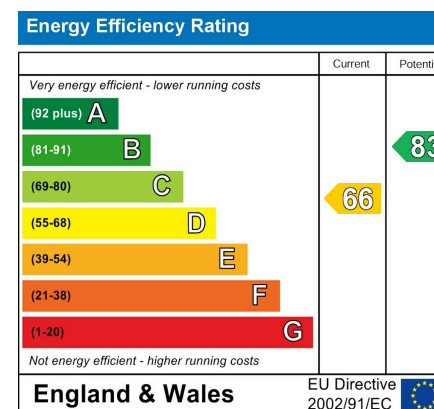
Lounge 11'11" x 16'4" (3.64 x 5.00)

Kitchen 12'4" x 8'5" (3.78 x 2.57)

Bedroom One 15'5" x 10'11" (4.71 x 3.33)

Bedroom Two 15'10" x 11'3" (4.83 x 3.43)

Bedroom Three 10'1" x 8'7" (3.09 x 2.63)



The difference between house and home

You may download, store and use the material for your own personal use and research. You may not republish, retransmit, redistribute or otherwise make the material available to any party or make the same available on any website, online service or bulletin board of your own or of any other party or make the same available in hard copy or in any other media without the website owner's express prior written consent. The website owner's copyright must remain on all reproductions of material taken from this website.



www.janforsterestates.com

Gosforth
High Heaton
Tynemouth
Property Management Centre

0191 236 2070
0191 270 1122
0191 257 2000
0191 236 2680

