





3



2



1

- **Period Terraced Home**
- **Two Reception Rooms**
- **Very Well Presented**
- **Freehold**
- **Viewing Recommended**
- **Three Bedrooms**
- **Close to Beach**
- **Amenities Nearby**
- **Council Tax Band *B***
- **Call for More Information**





**** Video Tour on our YouTube Channel | <https://youtu.be/Tf2P5dS02Nk> ****

This delightful, three-bedroom, period terraced house offers a perfect blend of character and modern living. Ideal for families or those seeking extra space.

Internally the property briefly comprises: - entrance lobby, hallway, spacious lounge with bay window, and a modern kitchen with fitted shaker style units and integrated oven and hob, along with access to the rear. To the first floor the large landing adds to the sense of space, making the property feel even more welcoming. There are two double bedrooms and a modern tiled bathroom WC with shower over the bath. Further benefits include gas central heating and double glazing.

Externally there is a private yard to the rear with an outbuilding.

Situated in an excellent location, this property is conveniently close to local schools and shops, making daily errands a breeze. Additionally, the stunning coastline is close by, offering the perfect opportunity for leisurely walks.

This is an excellent opportunity for anyone looking to settle in a vibrant community and early viewing is highly recommended. For more information, please call our Tynemouth branch on 0191 257 2000.

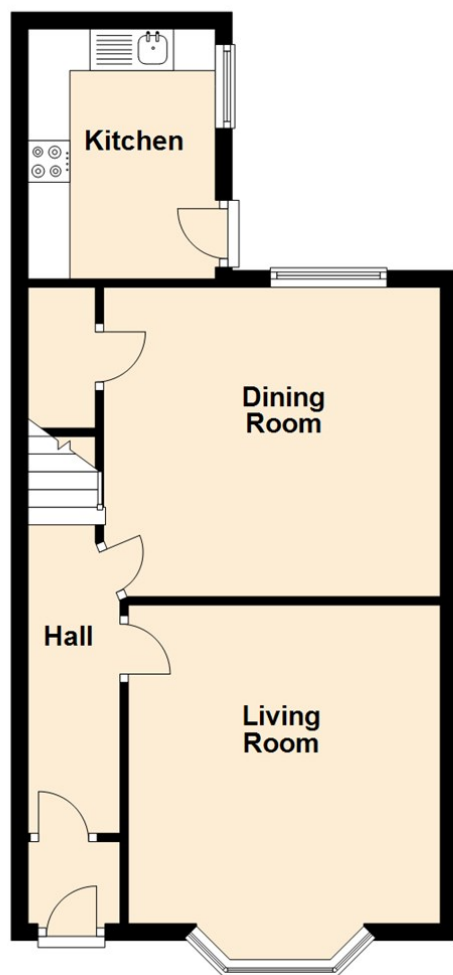
Tenure

The agent understands the property to be freehold. However, this should be confirmed with a licenced legal representative.

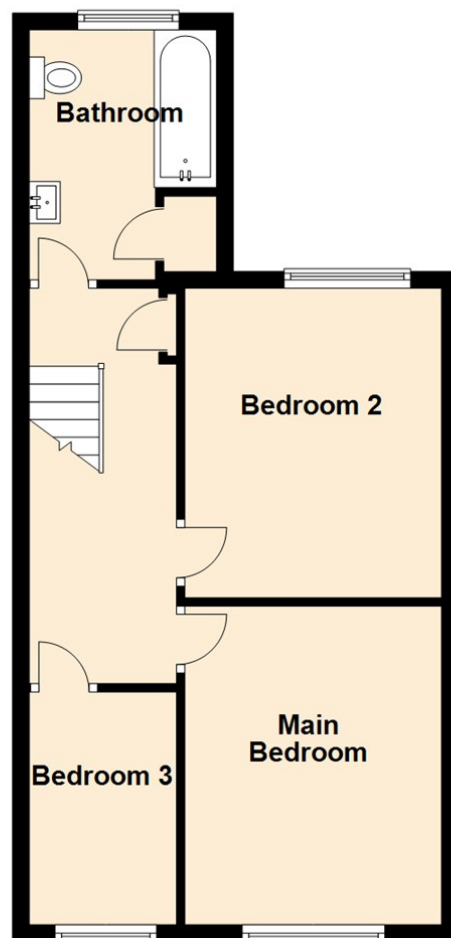
Council Tax Band *B*.



Ground Floor



First Floor



Living Room 12'5" x 12'2" (3.81 x 3.73)

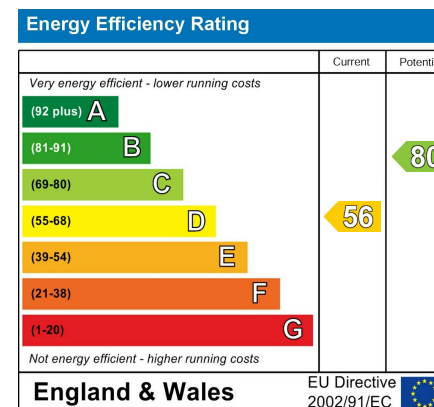
Dining Room 12'1" x 13'2" (3.70 x 4.03)

Kitchen 9'9" x 7'4" (2.99 x 2.24)

Main Bedroom 12'6" x 10'0" (3.82 x 3.07)

Bedroom Two 12'1" x 10'0" (3.70 x 3.07)

Bedroom Three 9'1" x 5'9" (2.78 x 1.76)



The difference between house and home

You may download, store and use the material for your own personal use and research. You may not republish, retransmit, redistribute or otherwise make the material available to any party or make the same available on any website, online service or bulletin board of your own or of any other party or make the same available in hard copy or in any other media without the website owner's express prior written consent. The website owner's copyright must remain on all reproductions of material taken from this website.



www.janforsterestates.com

Gosforth

High Heaton

Tynemouth

Property Management Centre

0191 236 2070

0191 270 1122

0191 257 2000

0191 236 2680

