





3



2



1

- Popular Location
- Three Bedrooms
- Front and Rear Gardens
- Freehold
- Viewing Recommended
- No Onward Chain
- Two Reception Rooms
- Driveway and Garage
- Council Tax Band *C*
- Call For More Information





**** Video Tour on our YouTube Channel |
<https://youtu.be/ey1PZpp9Frs> ****

This three-bedroom, semi-detached family home is situated within the popular Cornhill Crescent, in North Shields, and would make an ideal purchase for the growing family. Offered for sale with the benefit of no onward chain.

Internally the property briefly comprises to the ground floor: - entrance porch, hallway, lounge with bay window, dining room, kitchen, and a handy utility area. To the first floor there are three bedrooms, a shower room and separate w.c. The property further benefits from gas central heating and double glazing.

Externally there is a garden to the front and a driveway leading to the attached garage. There is also a beautiful, well stocked garden to the rear with a patio, lawn and planted borders.

The property is in a central location, and a fabulous variety of local amenities are within easy reach including cafes, bars, and restaurants. You are within easy striking distance of a number of shops and are also close to main travel links such as the A1058 and A19. There are schools which are accessible for primary and secondary needs in the area also.

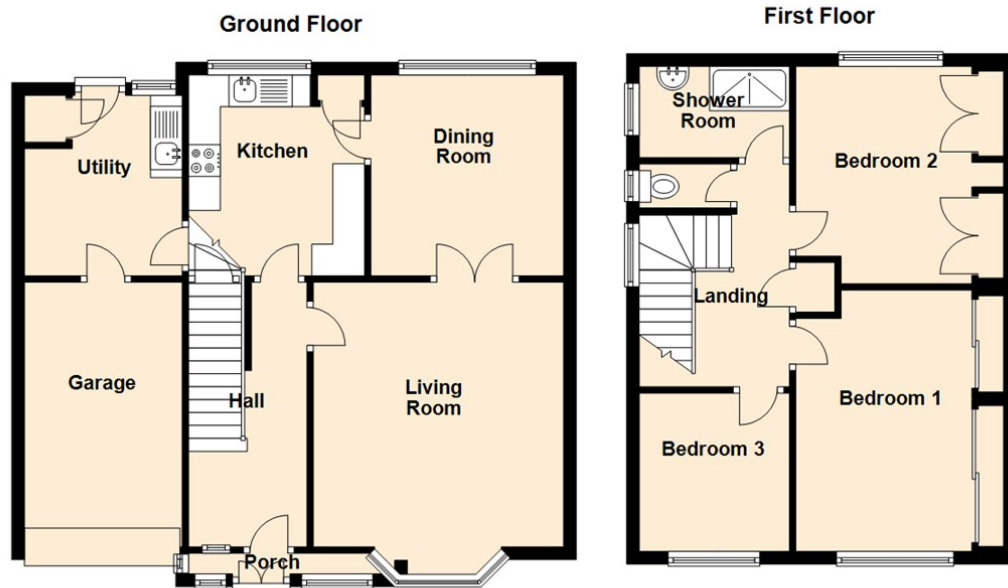
Please call our Tynemouth branch on 0191 257 2000 for more information and to book a viewing.

Tenure

The agent understands the property to be freehold. However, this should be confirmed with a licenced legal representative.

Council Tax Band *C*





Living Room 13'8" x 12'11" (4.18 x 3.95)

Dining Room 10'4" x 9'11" (3.17 x 3.04)


Kitchen 10'4" x 9'1" (3.17 x 2.78)

Utility 9'4" x 8'2" (2.85 x 2.49)

Bedroom One 13'2" x 10'9" (4.03 x 3.28)

Bedroom Two 11'3" x 10'9" (3.43 x 3.28)

Bedroom Three 8'2" x 7'9" (2.50 x 2.37)

Energy Efficiency Rating		
	Current	Potential
Very energy efficient - lower running costs		
(92 plus) A		
(81-91) B		
(69-80) C		
(55-68) D		
(39-54) E		
(21-38) F		
(1-20) G		
Not energy efficient - higher running costs		
England & Wales		EU Directive 2002/91/EC 

The difference between house and home

You may download, store and use the material for your own personal use and research. You may not republish, retransmit, redistribute or otherwise make the material available to any party or make the same available on any website, online service or bulletin board of your own or of any other party or make the same available in hard copy or in any other media without the website owner's express prior written consent. The website owner's copyright must remain on all reproductions of material taken from this website.



www.janforsterestates.com

Gosforth

0191 236 2070

Newcastle

0191 284 4050

High Heaton

0191 270 1122

Tynemouth

0191 257 2000

Low Fell

0191 487 0800

Property Management Centre

0191 236 2680

