





3



1



2

- Professional Landlord
- Brand New Property
- White Goods Included
- Off Road Parking
- Pets Considered
- Call For More Information
- Long Term Tenancies Available





Jan Forster Estates are delighted to offer this brand new 'Maidstone', located in the magnificent new development called West Meadows in Cramlington.

The ground floor consists of an entrance hall and a WC at the front of the property. From there, you'll find a reception room at the front, flooded with natural light and staircase leading to the first floor. There's a full integrated kitchen and dining area to the rear of the property featuring storage cupboard and French doors that open up to the garden, creating a seamless connection between indoor and outdoor spaces, perfect for entertaining. The first floor houses additional storage cupboard, 2 double bedrooms and 1 single bedroom which offer ample storage space. The master bedroom, which faces the front of the property, includes a luxury of an en-suite while the contemporary family bathroom completes the layout.

Living here means you can enjoy country walks at Northumberlandia, just minutes from your doorstep. As well as being a short drive or walk from Manor Walks shopping centre and Cramlington train station. With local amenities, close access to the A19 and A1 and schools rated 'Good' nearby, West Meadows is the perfect place for your family to call home.

Available from 28/11/24.

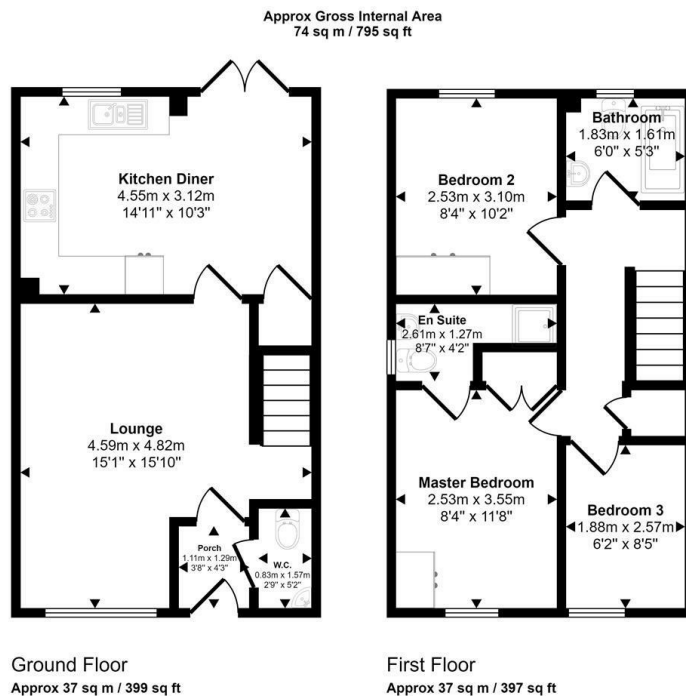
*Hyperoptic broadband pre-installed

Council Tax band TBC

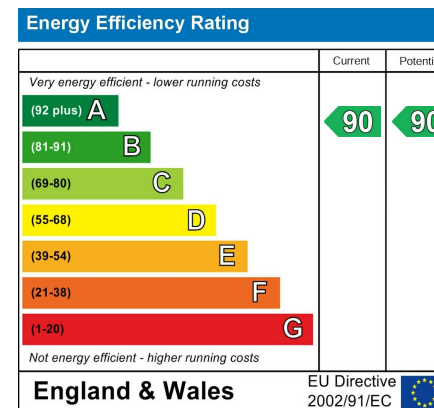
Lomond on behalf of Lloyds Living, part of Lloyds Banking Group operates a growing portfolio of more than 3,000 professionally managed homes for rent, improving access to good value, quality, sustainable housing across the UK. Lloyds Living helps to support investment into local communities by building and renting homes that people want, in the places they are needed.

Internal CGIs are indicative and to be used as guidance only





Whilst every attempt has been made to ensure the accuracy of the floor plan contained here, measurements of doors, windows, rooms and any other items are approximate and no responsibility is taken for any error, omission, or mis-statement. The measurements should not be relied upon for valuation, transaction and/or funding purposes. This plan is for illustrative purposes only and should be used as such by any prospective purchaser or tenant.



The difference between house and home

You may download, store and use the material for your own personal use and research. You may not republish, retransmit, redistribute or otherwise make the material available to any party or make the same available on any website, online service or bulletin board of your own or of any other party or make the same available in hard copy or in any other media without the website owner's express prior written consent. The website owner's copyright must remain on all reproductions of material taken from this website.



www.janforsterstates.com

Gosforth
Newcastle
High Heaton
Tynemouth
Low Fell
Property Management Centre

0191 236 2070
0191 284 4050
0191 270 1122
0191 257 2000
0191 487 0800
0191 236 2680

