





- Six Bedrooms
- Excellent Location
- No Upper Chain
- Close to the Freeman Hospital





**** Video Tour on Our YouTube Channel |
<https://youtu.be/Y1nkGOO0s0A> ****

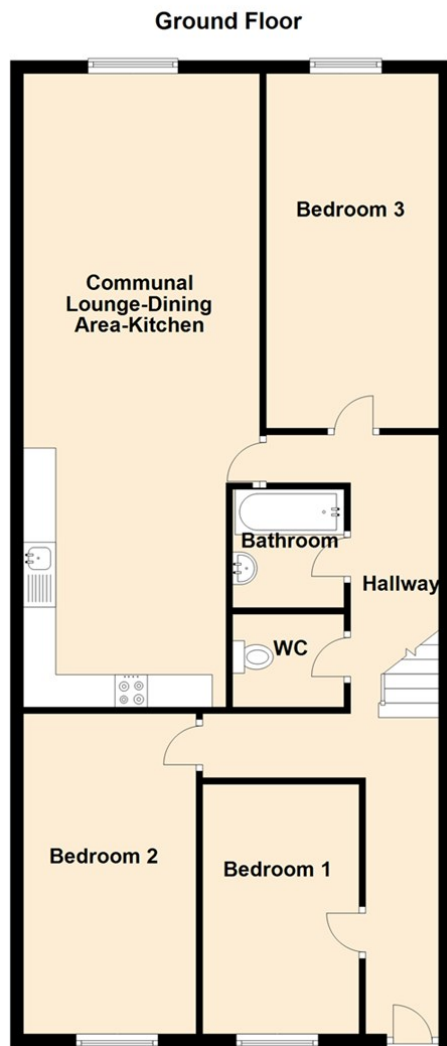
Offered for sale with no upper chain this six bedroom maisonette located close to all local amenities, excellent transport links and the Freeman hospital.

The property briefly comprises:- entrance hallway, bedroom one, bedroom two, bedroom three, separate WC, bathroom and spacious communal lounge, dining area and kitchen. To the second floor there are a further three bedrooms, a separate WC and shower room. The property also benefits from gas central heating and double glazing.

Early viewings come highly recommended. For more information please call our High Heaton branch on 0191 270 1122.

Council Tax Band *A*.





The difference between house and home

You may download, store and use the material for your own personal use and research. You may not republish, retransmit, redistribute or otherwise make the material available to any party or make the same available on any website, online service or bulletin board of your own or of any other party or make the same available in hard copy or in any other media without the website owner's express prior written consent. The website owner's copyright must remain on all reproductions of material taken from this website.



www.janforsterestates.com

Communal Lounge Kitchen 11'10" x 32'0" (3.63 x 9.76)

Bedroom One 7'10" x 12'7" (2.41 x 3.86)

Bedroom Two 8'8" x 16'3" (2.65 x 4.96)

Bedroom Three 18'6" x 8'8" (5.64 x 2.65)

Bedroom Four 11'11" x 10'3" (3.64 x 3.14)

Bedroom Six 16'0" x 10'3" (4.90 x 3.14)

Bedroom five 11'11" x 10'3" (3.64 x 3.14)

| Energy Efficiency Rating | | |
|---|---------|-----------|
| | Current | Potential |
| Very energy efficient - lower running costs | | |
| (92 plus) A | | |
| (81-91) B | | |
| (69-80) C | 76 | 77 |
| (55-68) D | | |
| (39-54) E | | |
| (21-38) F | | |
| (1-20) G | | |
| Not energy efficient - higher running costs | | |
| England & Wales <small>EU Directive 2002/91/EC</small> | | |

Gosforth

0191 236 2070

Newcastle

0191 284 4050

High Heaton

0191 270 1122

Tynemouth

0191 257 2000

Low Fell

0191 487 0800

Property Management Centre

0191 236 2680

