







- Popular Location
- Unique Layout
- Four Bedrooms
- Three Bathrooms
- Freehold
- Close To Beach
- Council Tax Band \*B\*
- Call For More Information







\*\* Video Tours on our YouTube Channel |  
<https://youtu.be/r9FRfRDGLCc> \*\*

This incredibly unique, link detached four-bedroom property is located in the popular Cheviot View, in Whitley Bay.

Internally the property briefly comprises to the ground floor: - entrance hallway and door opening to a generous garage/storage space with a snug/office area, offering potential to work from home and a shower room. To the first floor there is a fantastic, open plan living area with a modern fitted kitchen boasting a breakfast island, fitted units and integrated hob, double oven, and microwave. There are also two bedrooms, a shower room, and a stunning, bright and airy dining room, with a lantern roof and French doors opening to the balcony, seamlessly blending outside and in. To the second floor are a further two bedrooms, both with Velux windows, and the main with an en suite and sliding door wardrobes.



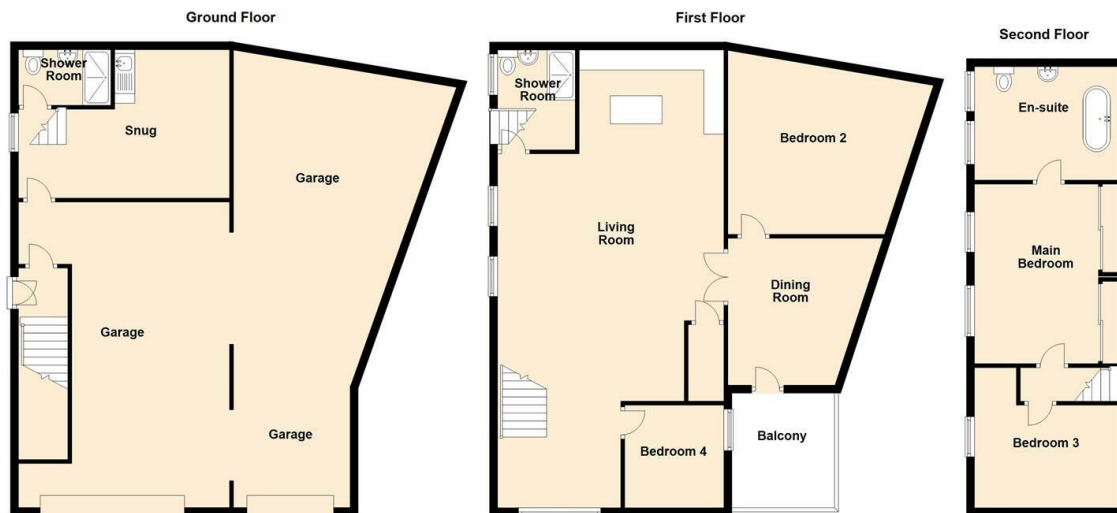
This property is positioned in an enviable location, only a short walk from The Promenade and Whitley Bay Beach. A wide variety of local amenities are within easy reach including cafes, bars, and restaurants. Excellent transport links are close by including the Metro, so you have a direct route towards Newcastle City Centre and surrounding areas. For the growing family, the property is well positioned for access to very well-regarded schools.

Early viewings come highly recommended. For more information, please call our Tynemouth branch on 0191 257 2000.

#### Tenure

The agent understands the property to be freehold. However, this should be confirmed with a licensed legal representative.

Council Tax band \*B\*.



Snug 12'2" x 17'3" (3.70m x 5.26m)

Living Area 37'5" x 18'6" (11.42 x 5.64)

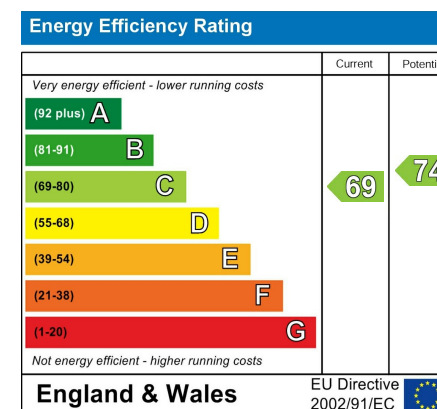
Dining Room 12'0" x 10'8" (3.66 x 3.27)

Main Bedroom 14'8" x 11'9" (4.48 x 3.59)

Bedroom Two 13'7" x 14'9" (4.15m x 4.51m)

Bedroom Three 8'0" x 11'9" (2.46 x 3.59)

Bedroom Four 8'4" x 8'1" (2.56 x 2.47)



## The difference between house and home

You may download, store and use the material for your own personal use and research. You may not republish, retransmit, redistribute or otherwise make the material available to any party or make the same available on any website, online service or bulletin board of your own or of any other party or make the same available in hard copy or in any other media without the website owner's express prior written consent. The website owner's copyright must remain on all reproductions of material taken from this website.



[www.janforsterestates.com](http://www.janforsterestates.com)

Gosforth

0191 236 2070

Newcastle

0191 284 4050

High Heaton

0191 270 1122

Tynemouth

0191 257 2000

Low Fell

0191 487 0800

Property Management Centre

0191 236 2680

