





2



2



1

- Mid Terraced House
- Open Plan Kitchen
- Fantastic Location
- Double Glazing
- Viewing Recommended
- Two Bedroom Home
- Freehold Property
- Council Tax Band *B*
- Gas Central Heating
- Call For More Information





This charming mid terraced home which is positioned in a highly regarded and sought after residential location, offering the buyer generous accommodation which is very much ready to move into.

Internally the general make-up of the property briefly comprises: - entrance lobby, hall, bright and airy lounge, open plan kitchen with fitted wall and floor units, and access to a handy utility room and ground floor WC. On the first floor you are presented with a generous family bathroom WC with separate shower cubicle and two double bedrooms. Externally there is a private yard to the rear. The property further benefits from gas central heating and double glazing.

Edith Street is in a fantastic position in Tynemouth, close to the Golf Course and Northumberland Park. This enviable location is only a short distance from Tynemouth Long Sands beach, and a fabulous variety of local amenities are within easy reach including cafes, bars, and restaurants. A great market is also available in Tynemouth Metro Station which has a wide variety of products and foods. The A1058 Coast Road is close by, so you have a direct route towards Newcastle City Centre. There are good links to public transport facilities including prime bus routes and the Metro service. For the growing family, the property is well positioned for access to very well-regarded schools.

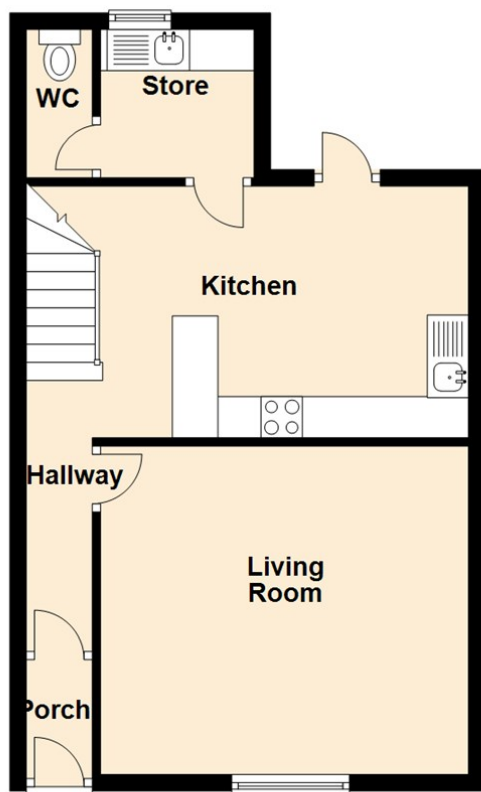
For more information and to book a viewing please call our Tynemouth branch on 0191 257 2000.

Tenure

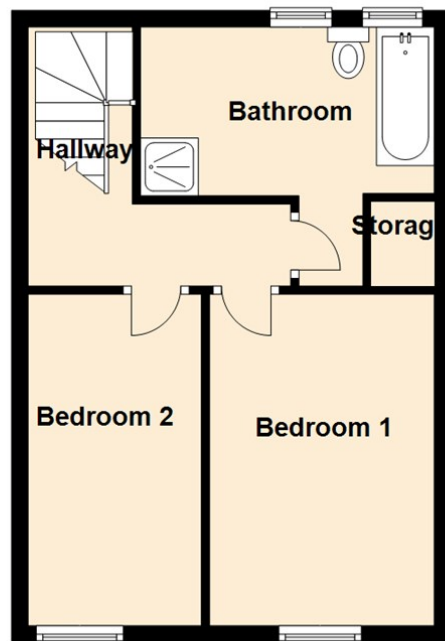
The agent understands the property to be freehold. However, this should be confirmed with a licenced legal representative.

Council Tax band *B*.

Ground Floor



First Floor

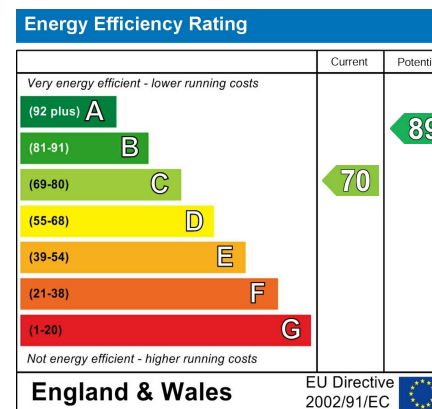


Living Room 13'0" x 14'7" (3.98 x 4.46)

Kitchen 10'0" x 17'7" (3.05 x 5.36)

Bedroom One 13'2" x 9'6" (4.02 x 2.91)

Bedroom Two 13'3" x 6'10" (4.05 x 2.10)



The difference between house and home

You may download, store and use the material for your own personal use and research. You may not republish, retransmit, redistribute or otherwise make the material available to any party or make the same available on any website, online service or bulletin board of your own or of any other party or make the same available in hard copy or in any other media without the website owner's express prior written consent. The website owner's copyright must remain on all reproductions of material taken from this website.



www.janforsterstates.com

Gosforth

Newcastle

High Heaton

Tynemouth

Low Fell

Property Management Centre

0191 236 2070

0191 284 4050

0191 270 1122

0191 257 2000

0191 487 0800

0191 236 2680

