





- Second Floor
- Two Bedrooms
- Allocated Parking
- Close To Amenities
- Viewing Recommended
- Popular Location
- Two Bathrooms
- Leasehold
- Council Tax Band *A*
- Call For More Information





**** Video Tour on our YouTube Channel |
<https://youtu.be/zLhJiQg7lb8> ****

This immaculately presented, two-bedroom apartment is positioned on the second floor of the popular Palatine Place in Gateshead. Close to excellent amenities and transport links the property will appeal to a variety of buyers.

Briefly comprising: - communal entrance with stairs and lift access to the second floor, entrance hallway with storage, spacious open plan lounge/kitchen diner with fitted units and integrated oven and hob, two double bedrooms; bedroom one with an en-suite, and there is a modern three-piece bathroom/w.c.

The property benefits from electric heating and double glazing. Externally there are communal areas and allocated parking.

For more information and to book your viewing please call our Low Fell branch on 0191 487 0800.

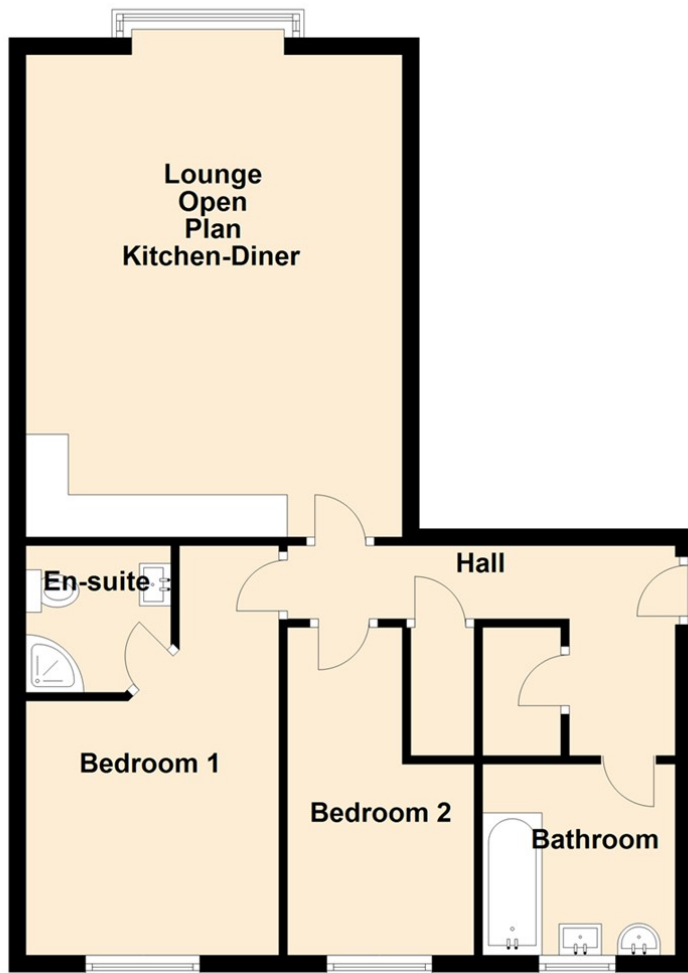
Tenure

The agent understands the property to be leasehold. However, this should be confirmed with a licenced legal representative.

Council Tax band *A*.

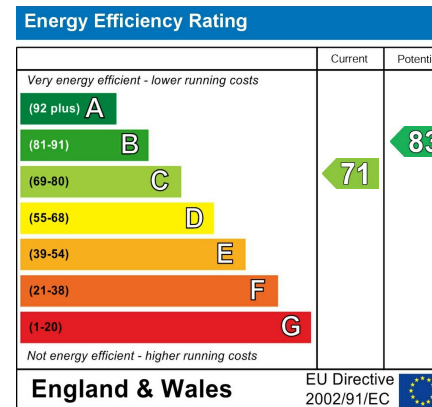


Second Floor



The difference between house and home

You may download, store and use the material for your own personal use and research. You may not republish, retransmit, redistribute or otherwise make the material available to any party or make the same available on any website, online service or bulletin board of your own or of any other party or make the same available in hard copy or in any other media without the website owner's express prior written consent. The website owner's copyright must remain on all reproductions of material taken from this website.



Gosforth
Newcastle
High Heaton
Tynemouth
Low Fell
Property Management Centre

0191 236 2070
0191 284 4050
0191 270 1122
0191 257 2000
0191 487 0800
0191 236 2680



www.janforsterstates.com

