





- First Floor Flat
- Two Double Bedrooms
- Period Building
- Sash Windows
- Council Tax Band *C*
- Central Tynemouth
- No Onward Chain
- Long Lease
- Close To Metro
- Call For More Information





**** Video Tour on our YouTube Channel |
<https://youtu.be/XhkqDNGxMI0> ****

This charming two bedroom, first-floor apartment is positioned in Allendale Place in Tynemouth, and would be an ideal choice for couples, small families, or those seeking a comfortable space to call home. Offered for sale with the benefit of no onward chain.

The apartment is situated within a distinguished period building and is accessed via a communal entrance and stairs to the first floor. Briefly comprising: - entrance lobby, bright and airy lounge with two sliding sash windows, opening to Juliet balconies, kitchen with wall and floor units, inner hallway with storage, two double bedrooms and a bathroom WC with four-piece suite. Further benefits include gas central heating.

Conveniently located, this apartment is just a short walk from the Metro station, making commuting and exploring the surrounding areas effortless. Tynemouth itself is renowned for its stunning coastline, vibrant community, and an array of local amenities, including shops, cafes, and restaurants.

Viewings are highly recommended on this lovely home. For more information, please call our Tynemouth branch on 0191 257 2000.

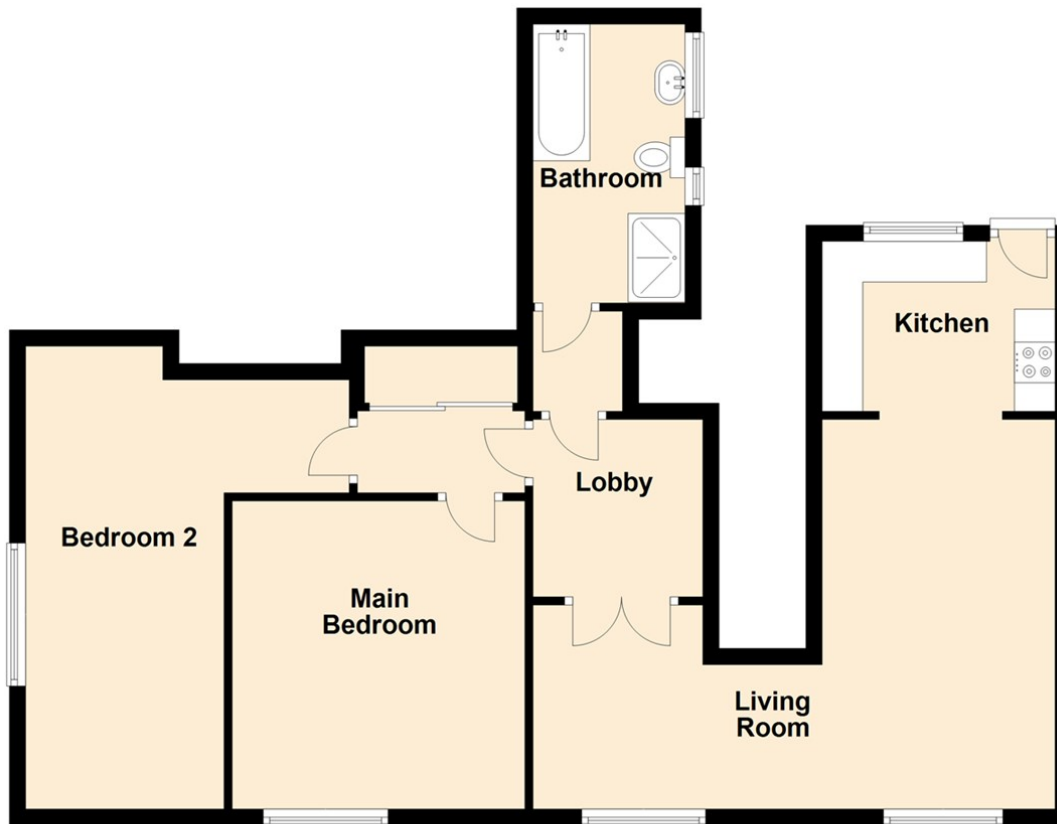
Tenure

The agent understands the property to be leasehold. However, this should be confirmed with a licenced legal representative.

Council Tax band *C*.



Ground Floor

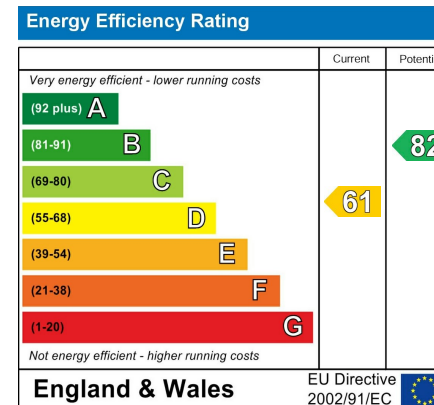


Living Room 8'2" x 21'0" (2.51 x 6.42)

Kitchen 6'10" x 9'4" (2.09 x 2.86)

Main Bedroom 12'5" x 11'9" (3.79 x 3.60)

Bedroom Two 17'3" x 5'6" (5.28 x 1.69)



The difference between house and home

You may download, store and use the material for your own personal use and research. You may not republish, retransmit, redistribute or otherwise make the material available to any party or make the same available on any website, online service or bulletin board of your own or of any other party or make the same available in hard copy or in any other media without the website owner's express prior written consent. The website owner's copyright must remain on all reproductions of material taken from this website.



www.janforsterestates.com

Gosforth
High Heaton
Tynemouth
Property Management Centre

0191 236 2070
0191 270 1122
0191 257 2000
0191 236 2680

