





- **First Floor**
- **Available Early June**
- **Close To Amenities**
- **Viewing Recommended**
- **Council Tax Band *A***
- **Two Double Bedrooms**
- **Furnished**
- **Transport Links Nearby**
- **Call For More Information**





TWO DOUBLE BEDROOMS | FIRST FLOOR FLAT | FURNISHED

This two double bedroom first floor flat is available early June 2025 on a furnished basis in this quiet residential area, in Forest Hall.

This property enjoys a prime location, and is close to a wealth of local amenities, including highly regarded schools, a variety of shops, and supermarkets. There are also excellent leisure facilities close by, such as Killingworth Lakeside Centre and Rising Sun Country Park. For those seeking further convenience, quick access to major routes make Newcastle city centre and the coastline easily accessible. Benton Metro station is also a 10 minute walk away.

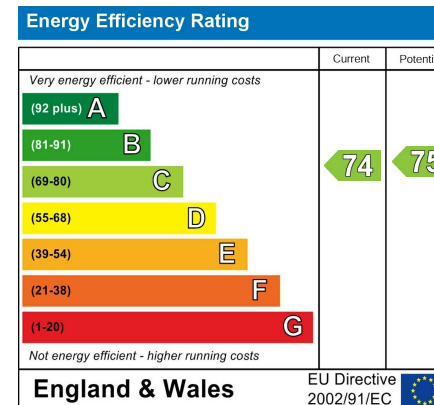
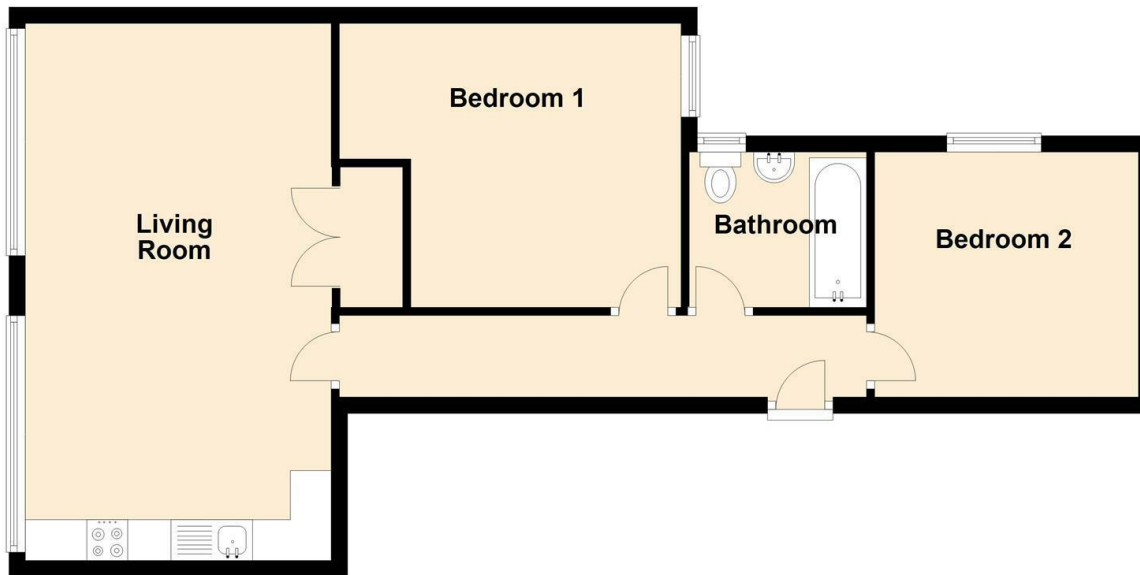
Briefly comprising:- open plan lounge/kitchen/diner with fitted wall and floor units and integrated oven and hob, two double bedrooms, and a modern bathroom WC with a shower over the bath.

For more information and to book a viewing please call our lettings team on 0191 270 1122.

Council Tax band *A*.



First Floor



The difference between house and home

You may download, store and use the material for your own personal use and research. You may not republish, retransmit, redistribute or otherwise make the material available to any party or make the same available on any website, online service or bulletin board of your own or of any other party or make the same available in hard copy or in any other media without the website owner's express prior written consent. The website owner's copyright must remain on all reproductions of material taken from this website.



www.janforsterestates.com

Gosforth
High Heaton
Tynemouth
Property Management Centre

0191 236 2070
0191 270 1122
0191 257 2000
0191 236 2680

