







2



1



1

- Detached Bungalow
- Two Double Bedrooms
- Close To Amenities
- Council Tax Band \*D\*
- Viewing Recommended
- Annexe
- Off Street Parking
- Gardens to Three Sides
- Freehold
- Call For More Information







This beautifully presented, two-bedroom detached bungalow offers the buyer a delightful blend of comfort and convenience.

The location of the property is close to excellent transport links and local amenities. You will find yourself within close proximity to the Ministry, Freeman Hospital, and Four Lane Ends Metro Station, making commuting and daily errands a breeze.

Upon entering, you are welcomed into a spacious lounge-dining room, complete with a feature log burner, perfect for those cosy evenings. The open-plan kitchen-diner is designed for both functionality and socialising, making it an ideal space for entertaining family and friends. The bungalow features two well-proportioned bedrooms, providing ample space for relaxation and rest. The bathroom is thoughtfully designed and features an L-shaped bath with shower over. Further benefits include gas central heating, double glazing and there is ample storage space available in the loft area.

Outside, the bungalow is complemented by a front driveway with gravelled areas, offering convenient off-street parking. The rear garden is a private oasis, accessible via side access, perfect for enjoying the outdoors or hosting summer gatherings. Additionally, a detached annex provides further versatility, whether for guests, a home office, or additional storage.

This delightful bungalow presents an excellent opportunity for those seeking a peaceful yet accessible home, with versatile space. Don't miss the chance to make this charming property your own.

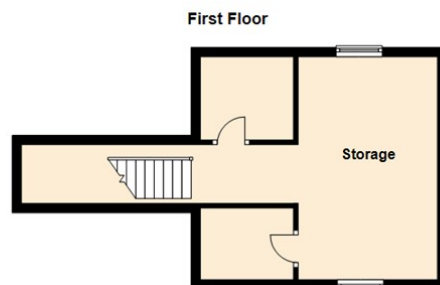
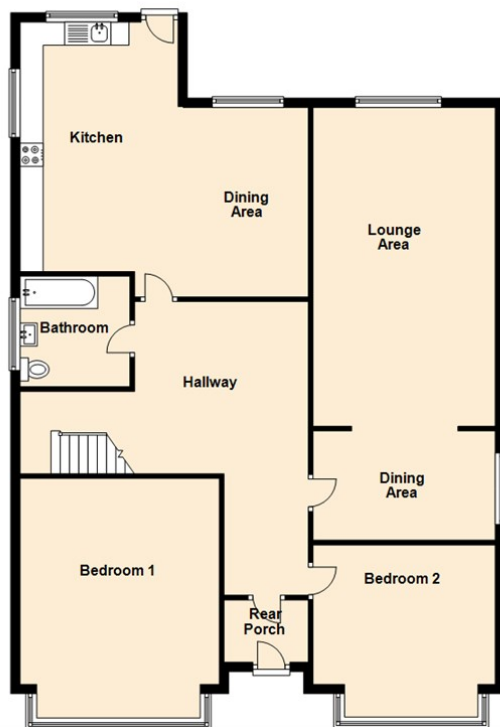
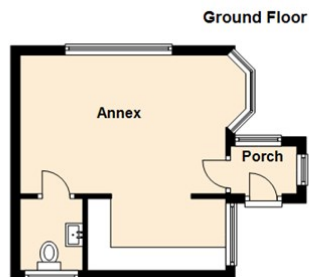
Please call our Heaton team on 0191 270 1122 for more information and to book a viewing.

#### Tenure

The agent understands the property to be freehold. However, this should be confirmed with a licenced legal representative.

Council Tax Band \*D\*.





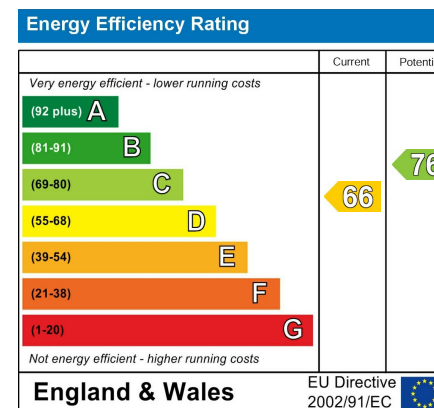
Lounge 22'7" x 13'0" (6.89 x 3.97)

Dining Area 13'4" x 8'10" (4.08 x 2.71)

Kitchen Dining Room 19'3" x 11'2" (5.87 x 3.42)

Bedroom One 13'10" x 12'1" (4.24 x 3.70)

Bedroom Two 14'0" x 9'6" (4.27 x 2.92)



## The difference between house and home

You may download, store and use the material for your own personal use and research. You may not republish, retransmit, redistribute or otherwise make the material available to any party or make the same available on any website, online service or bulletin board of your own or of any other party or make the same available in hard copy or in any other media without the website owner's express prior written consent. The website owner's copyright must remain on all reproductions of material taken from this website.



[www.janforsterestates.com](http://www.janforsterestates.com)

Gosforth  
High Heaton  
Tynemouth

Property Management Centre

0191 236 2070

0191 270 1122

0191 257 2000

0191 236 2680

