







- Popular Location
- One Bedroom
- Bright And Airy
- Ideal First Time Buy
- Viewing Recommended
- Ground Floor
- Close To Beach
- Leasehold
- Council Tax Band \*A\*
- Call For More Information







Positioned in the heart of Tynemouth Village, close to the seafront, this one bedroom apartment will appeal to the first time buyer.

Internally the property briefly comprises: - entrance lobby with storage, spacious lounge dining room with dual aspect bay windows, kitchen with a range of fitted units and integrated oven and hob, a generous double bedroom with a floor-to-ceiling window and walk in wardrobe, there is a tiled bathroom/w.c. with shower over the bath.

The property further benefits from gas central heating and externally there are communal gardens.

This enviable location is within walking distance of King Edwards Bay and a fantastic variety of shops, cafes and restaurants. Public travel links are close by and will provide you with bus routes to main Tyneside centres. You are also within walking distance of a Metro station which will offer you access to Newcastle City Centre in some twenty minutes. The Tyne Tunnel is within easy striking distance which will get you going South bound on the A19. The A1066 is also close by, linking you to all surrounding Tyneside locations.

#### Tenure

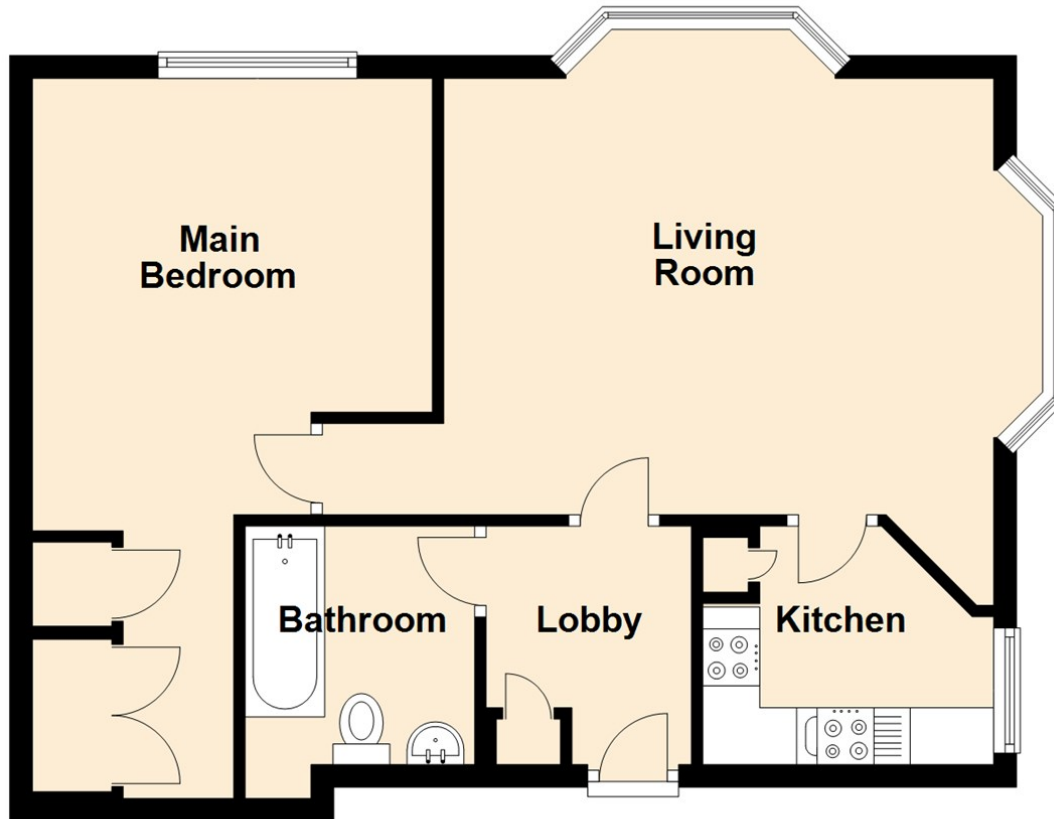
The agent understands the property to be leasehold. However, this should be confirmed with a licenced legal representative.

For more information and to book a viewing please call our Tynemouth branch on 0191 257 2000.

Council Tax Band \*A\*.



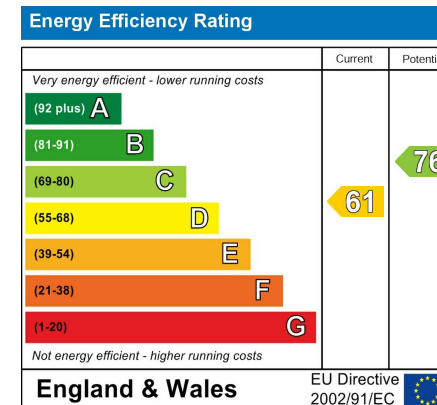
## Ground Floor



Living Room 12'7" x 17'3" (3.84 x 5.27)

Kitchen 6'10" x 8'4" (2.10 x 2.56)

Main Bedroom 20'9" x 11'6" (6.34 x 3.52)



## The difference between house and home

You may download, store and use the material for your own personal use and research. You may not republish, retransmit, redistribute or otherwise make the material available to any party or make the same available on any website, online service or bulletin board of your own or of any other party or make the same available in hard copy or in any other media without the website owner's express prior written consent. The website owner's copyright must remain on all reproductions of material taken from this website.



[www.janforsterestates.com](http://www.janforsterestates.com)

Gosforth  
High Heaton  
Tynemouth  
Property Management Centre

0191 236 2070  
0191 270 1122  
0191 257 2000  
0191 236 2680

